

Heat Sealer C2S

C2S System



This unit, in steel inox, completes and extends the fresh product counter packaging options offered by the C2M SYSTEM, permitting use of two reels and avoiding use of sheets.

It provides great operating safety together with easy and efficient use and ensures sealed packaging for maximum product hygiene and protection.

This is an indispensable unit for Operators wishing to upgrade and offer top-quality Counter Service to their customers.

Technical Features

Frame: inox steel
Total weight: 38 Kg approx. (without reel)
Power supply: single-phase – earth
Power voltage: 220 V \pm 10%
Power frequency: 50 Hz
Installed power: 900 W

Equivalent continuous sound radiation pressure under normal working conditions at a distance of 1 m is:
Leq(A) < 70 db(A)
Peak sound radiation pressure is: Lpe < 63 Pa

OVERALL DIMENSIONS:

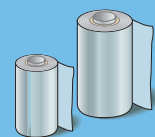
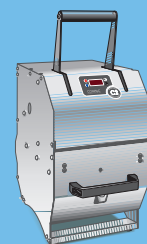
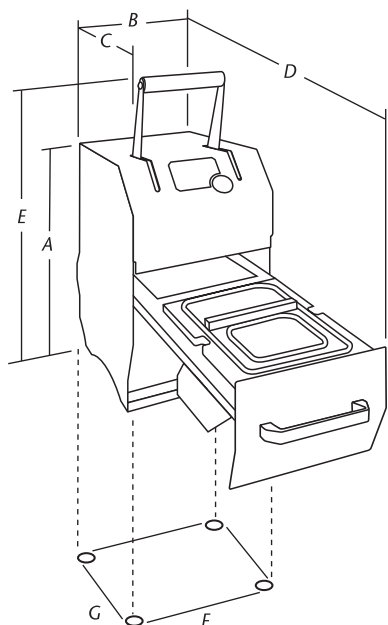
A: 495mm C: 450mm E: 660mm
B: 280mm D: 795mm

MINIMUM DIMENSIONS OF WORKTABLE:

F: 260mm G: 310mm

Above reported data are indicative.

The manufacturer reserves the right to make any technical changes for the purpose of upgrading the machine, without notice.

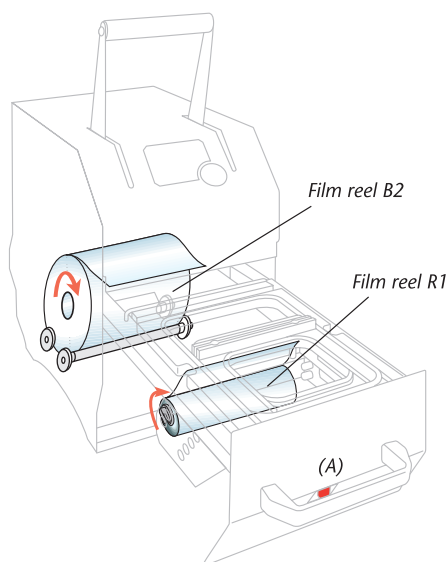


COMPAC
COMMERCIALE PACKAGING

Via L. Spallanzani 8/A - 42024 Castelnovo di Sotto (RE) ITALY - Tel. +39. 0522.688.509 - Fax +39.0522.688.552 - www.compac.it - e-mail: info@compac.it

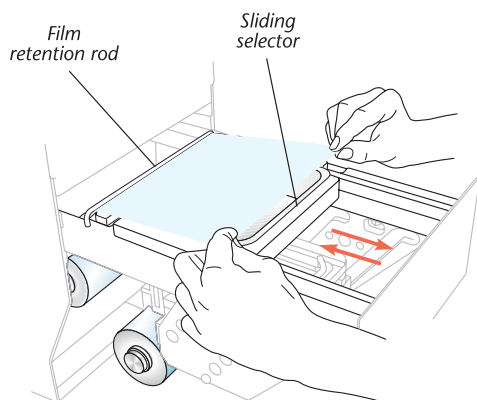
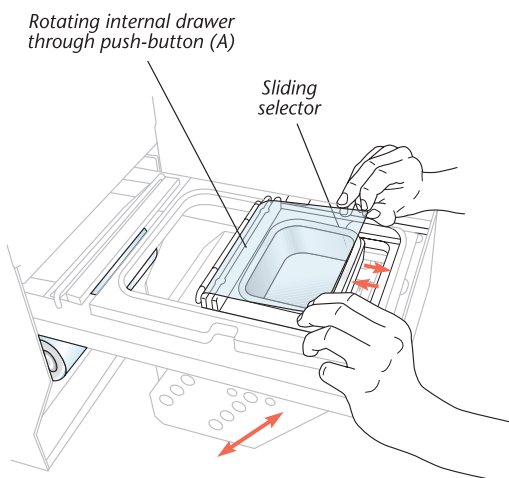
Operating Specifications

C2S System



Two reels permitting use of all containers and trays range.

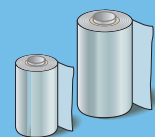
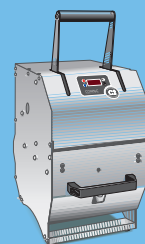
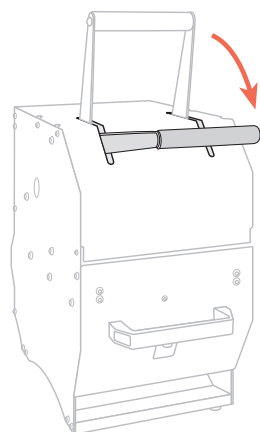
Rotating internal drawer for selecting the desired size of Series P1 - P2 containers. It allows the sealing of containers P1 - P2 from reel R1 avoiding the use of sheets.



Pull-out drawer for total operating safety, with sliding selector for choosing the desired size of Series G - L - M containers or trays.

Film sealing cycle with automatic cutting.

To start the cycle, simply lower the lever as far as it will go and then release. It will then elevate automatically in a few seconds, after sealing operation has been completed.



COMPAC

COMMERCIALE PACKAGING Via L. Spallanzani 8/A - 42024 Castelnovo di Sotto (RE) ITALY - Tel. +39. 0522.688.509 - Fax +39.0522.688.552 - www.compac.it - e-mail: info@compac.it

